

COMPANY PROFILE

About Us

Unique Pumps Solutions (**UPS PUMPS**), based in Eastern Province of Saudi Arabia, specializes in ground water control and bulk water transfer & management services. We offer both sales and rental for well point dewatering, deep well dewatering, pipeline bypass dewatering, diesel engine driven dewatering pumps and electric submersible dewatering pumps. Additionally we also provide installation, inspection & maintenance of bore wells as well.

In terms of production, we also design and assemble diesel engine driven centrifugal dewatering pumps of different sizes and capabilities in Saudi Arabia.

UPS Pumps has earned reputation for being trustworthy and dependable by forging long lasting bonds with our customers, suppliers & contractors.

With our superior technical knowledge in the field and continuous improvement, along with strict adherence to quality control and assurance practices, we strive to provide reliable and efficient solutions throughout the kingdom.

Our Vision

Our Vision is to build total value by innovating to deliver consumer value and customer leadership faster, and more completely than our competition. This Vision is supported by two fundamental principles that provide the foundation for all of our activities: Organizational Excellence and Core Values.

Building for the Future

UPS Pumps is integral to the country's economic and industrial development. We are approved vendor with major big clients of the kingdom. In parallel with the Kingdom's economic growth plans, UPS Pumps will nurture its social and economic responsibilities, in terms of assets, capacity, capability and skilled manpower.

Thanking you for sparing your valuable time and reviewing our offerings, we look forward to do business with your esteemed organization and assuring you our best attention and service.

Best Regards,

UPS PUMPS

Groundwater Control & Bulk Water Transmission

UPS Pumps, with its quality resources and proven experience in Saudi Arabia, is able to deliver groundwater control and bulk water transmission & management services effectively. We provide a wide range of both goods and services exclusively throughout the kingdom.

Dewatering Pumps

UPS self priming (vacuum assisted) diesel engine driven dewatering pumps are suitable for nearly any dewatering application, especially in well point dewatering, straight dewatering and sewer-by-pass applications.

- ◆ Size Range: 4" - 12"
- ◆ Capacity Range: 200-2000 m³/hr
- ◆ Pump Material: Stainless Steel, Mild Steel
- ◆ Engine: Kirloskar, Eicher (Made in India)

We offer both sales and rental services for the pumps.



High Pressure Jetting Pumps

UPS high pressure jetting/booster pumps are suitable for jetting, dewatering, drain flashing, tank cleaning and booster pressure applications like emergency fire pumping.

- ◆ Suction inlet size: 4"
- ◆ Discharge outlet size: 2"
- ◆ Capacity: 75 m³/hr
- ◆ Maximum head: 40 m
- ◆ Working pressure: 8-10 bar
- ◆ Engine: Kirloskar, Eicher (Made in India)

We offer both sales and rental services for the pumps.



Submersible Pumps

SS electric submersible pumps of size range 1" to 10" used for sump dewatering, underground drainage water, non-clog sump sewage, industrial water slumping, irrigation water as well as for deep well dewatering applications. Additionally, we supply electric Lubi borehole pumps for agricultural and domestic needs.

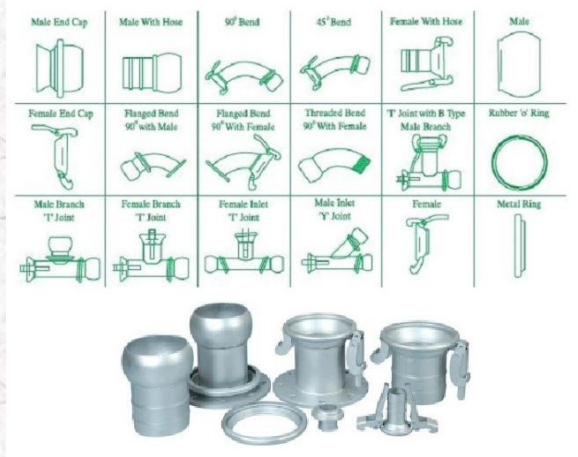
- ◆ Size range: 1" - 10"
- ◆ Capacity : 96 US gpm to 900 US gpm
- ◆ Pump Material: Stainless Steel, Cast Iron, Chromium
- ◆ Maximum head up to 300 m



Dewatering Accessories & Fittings

UPS Pumps is supplying all accessories needed for well point & deep well dewatering systems and also hose fittings.

- ◆ GI header pipes
- ◆ Joints
- ◆ Quick couplings (Miller, Bauyer, Perrout)
- ◆ PVC/steel well points
- ◆ Cam-lock couplings
- ◆ Rubber 'O' rings
- ◆ Grease Tapes



Well Drilling & Maintenance

UPS Pumps is involved in installing new wells and also servicing existing wells. We are capable of installing borewells with finished bores up to 300 mm and a maximum depth of 300 feet.

- ♦ Drilling new borewells
- ♦ Cleaning and servicing of old wells
- ♦ Supplier of drilling machines



Hydraulic Powered Drilling Machine

Heavy duty drill machine used extensively for construction tasks. Readily fitted as an attachment to cranes, excavators and trucks. Standard and heavy duty models provide an economical solution to all general purpose vertical drilling requirements. Efficient performance, high return on capital and low running cost makes these drills a favourite with users.

Hydraulic/ Pneumatic Drive Drill

- ♦ Hole size range: 6" - 36"
- ♦ Auger size range: 6" - 36"
- ♦ Horizontal/Vertical Tungsten Carbide cutter head



Filtration Systems

SITS provide filtration solutions to combat all types of air pollution by providing various environmental services and filters system. Additionally, we also provide water filtration systems.

- ♦ Cartridge collectors - used for very fine dust and other special contaminates
- ♦ Silo venting filter - used to separate dust from air and send back to silo
- ♦ Baghouse filter - used to capture and separate harmful particles, dust and other contaminates
- ♦ Filters element - Cartridge, Fabric, Panel Air, Hydraulic



Sedimentation Tank

The sedimentation tank consist of tranquilization zone to trap the sand and discharge area to make sure that the water discharged is free of sand and other floating material. This is achieved by providing partition in the tank. The tank is coated with protective coating.

- ♦ Outlet & Inlet sizes: 2", 4", 6"
- ♦ Tank capacity: 1500 liters - 2500 liters



Filter Pot

Filter Pots allow for solids and contaminant removal by bag filter. Bag Filters can be chosen by micron size.

- ♦ Easily setup in parallel to increase filtering capacity
- ♦ 50 GPM/Bag
- ♦ Quick change filters
- ♦ Duplex 4 bag units
- ♦ Outlet size range: 2" - 8"

